

## **PROGRAM INFORMATION**

The March meeting will be held at  
**JAKE KEMPER's Shop**

**9900 S CR 1200**

**Midland, Texas at 10:00 AM**

**Making**

**A BOWL FROM**

**SOLID WOOD**

**BY**

**JAKE KEMPER**

APRIL DEMO:  
BOWLS FROM SOLID  
STOCK—JAKE KEMPER



MAY DEMO:  
USING VACUUM CHUCKS  
ERNIE SHOWALTER



JUNE DEMO:  
TOOL SHARPENING  
KEITH HUGHES



**COMANCHE TRAIL WOODTURNERS  
1 METZ CT  
MIDLAND, TX 79705**

## **Comanche Trail Woodturners NEWSLETTER**



**MEETING  
Notice  
4/11/09**



**DATE: 3/14/09  
TIME: 10:00 A.M.  
Location:**

**9900 S CR 1200  
Midland, Texas**

## WOODCHIPS:

EVERYONE SHOULD NOTE THE MEMBER PROFILE COMPLIED BY DON FARRIS. THIS IS SOMETHING WE ARE GOING TO TRY TO DO EACH WEEK SO EVERYONE CAN GET AN IDEA AS TO WHAT TYPE OF PEOPLE MAKE UP OUR CLUB! IF YOU NOTICE THE PHOTOS ARE THE SAME THIS MONTH IT IS BECAUSE OF MY CRAZY BUSY SCHEDULE. I FELT IT WAS MORE IMPORTANT TO GET OUT THE NEWSLETTER IN A TIMELY FASHION THAN TO HAVE IT GET TO YOU LATE.

I AM AGAIN SOLICITING CONTRIBUTIONS FROM MEMBERS, EVEN IF IT IS ONLY SOME TOOL YOU WANT TO SELL. IF YOU WILL GET IT TO ME BY THE FRIDAY OF THE WEEK BEFORE MEETING WEEK, I'LL GET IT POSTED. ONCE YOU GET INTO THE GROOVE OF PARTICIPATION YOU WILL FIND IT IS REWARDING AND FUN!!

**"In my many years I have come to a conclusion that one useless man is a shame  
Two is a law firm and three or more is a congress"  
(John Adams)**



## LAST MONTHS PROGRAM:

**WOW! JIM DAVE CONTINUES TO AMAZE US WITH HIS SEGMENTED WORK. EVEN IF YOU DON'T OR ARE AFRAID TO TRY SEGMENTED WORK, YOU SHOULD HAVE NOT MISSED THIS DEMO**

**GORGE HANCOCK, EDITOR**

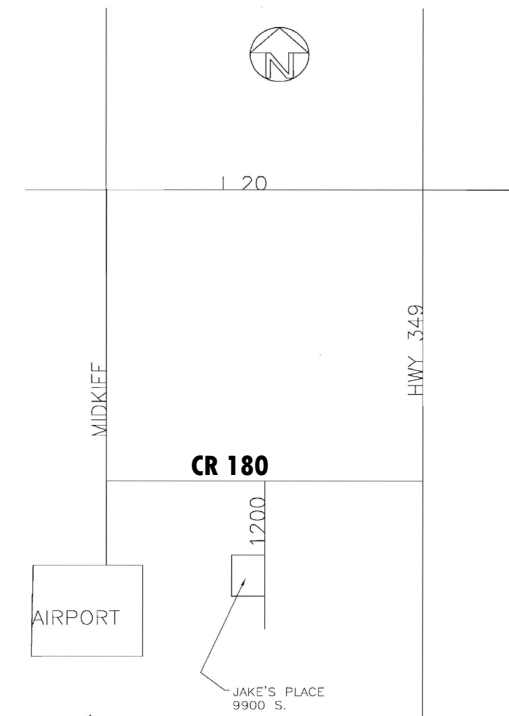
**REMEMBER THE AAW NATIONAL SYMPOSIUM IN ALBUQUERQUE, IT'S ABOUT AS CLOSE AS IT WILL EVER BE TO MIDLAND. I PLAN TO ATTEND AND HOPE TO SEE SOME OTHER MEMBERS THERE.**

### CONTACTS:

JIMMY EDWARDS- PRESIDENT (432) 332-9101  
CHRIS HUGHES-SECY/TREAS (432) 699-7629  
MAURICE COLDEWAY -VICE PRESIDENT  
KEN RILEY -PROGRAM CHAIRMAN  
GEORGE HANCOCK- NEWSLETTER EDITOR/SWAT REP.  
ERNE SHOWALTER- BOARD MEMBER  
TOM CHANDLER -BOARD MEMBER JIM DAVIS-BOARD MEMBER  
JIM KETCHEM-BOARD MEMBER Bill Garner-BOARD MEMBER, STAN KRETZLER-BOARD MEMBER  
DON FARRIS- BOARD MEMBER- JAKE KEMPER, IMMEDIATE PAST PRESIDENT



**PLEASE PAY YOUR 2009 DUES. A NUMBER OF YOU ARE DELINQUENT. HELP US KEEP OUR CLUB FINANCIALLY SOUND. SEE CHRIS SATURDAY**



**We need more Participation with articles written  
By our members. Submit yours and see your  
Name in Print!**

**Remember, we keep the club going and have our great club  
socials because of the ticket sales from the drawing.  
The ticket sales are so good because of the quality things that  
are given for the raffle.**

**Chris Hughes, Secretary**

**SHARP TOOLS MAKE FOR BETTER AND SAFER  
WORK  
KEEP YOUR TOOLS IN GOOD SHAPE!!!!**

**MEMBER PROFILE:  
LET'S GET ACQUAINTED WITH OUR MEMBERS!**

**KEN RILEY** moved hi family to west Texas in January 1977 for one year. And like so many others he fell in love and is still here. He believes the people are definitely the nicest part. Initially he worked as a plumber with some paint contracting on the side. Two years later Ken was a divorced single parent with a 3 year old son. Owning and operating a plumbing business isn't easy for a single parent, so Ken sold his business and went to work as a building superintendent for an oil and gas operator in Midland. During this time Ken obtained his master plumbing and mechanical contractor's licenses. He was in charge of taking care of numerous properties in west Texas and New Mexico.

During this time Ken met his wife Janie in Sunday school, she was widowed with a 12 year old son and a 10 year old daughter. Ken and Janie blended their families almost 18 years ago. Ken returned to college when they married to finish his degree. Not too many plumbers have a psychology degree....nor do they probably need one. Ken became Director of Physical Plant at Midland College over ten years ago. his boss is Dennis Sever, also a member of our club.

Ken was introduced to woodturning in quite an unusual way. He was attending and helping a family member through rehab. She had fallen and broken her hip. There in rehab was another lady going through rehab due to two knee replacements. Her name was Helen Easley. The Easleys and Ken became friends, and Helen brought some of her wood turnings to show Ken. Aubrey (Helen's husband) participated in this also. Ken became very interested in the lathe work, and the rest is history! He joined Comanche Trails Woodturners and AAW soon after.

When time came to look for club officers for the next year, new member, Ken, was asked if he might consider serving. Ken immediately said "yes", he would like to. His first position was liason between Midland College and the Comanche Trails club. At that time, Comanche Trails Woodturners were trying to introduce a woodturning class through Midland College. The next year Ken stepped up again and helped set up demonstrators for the monthly club meetings. He has participated in this position for two years.

Ken recently could not get a demonstrator for a monthly meeting. Even though he had never done a demo before, he assigned himself to the task. Ken continues to be a strong member with his enthusiasm, club support, and service to Comanche Trails Woodturning Club.

Thank you, KEN RILEY, for a job well done.



